

Moving Toward Moderation: How UNL utilized a data- driven collaborative approach to reduce high-risk drinking and related harms

Linda Major

Emeritus Assistant to the VCSA
Emeritus Director, Center for Civic Engagement
University of Nebraska-Lincoln
Nebraska Collegiate Prevention Alliance

July 10, 2024



UNIVERSITY OF NEBRASKA-LINCOLN

Session Objectives

1. Describe the tools and techniques used to develop, implement, and monitor strategy deployment,
2. Identify key alcohol-related outcome measures tracked across the project,
3. Offer tips for building a strong and sustainable coalition, and
4. Share the lessons learned in institutionalizing a community wide approach to college student drinking.



Recap: The Nebraska Story

- 1997 Harvard College Alcohol Survey*
- A Matter of Degree
 - Environmental approach
 - Town-gown collaboration
- NU Directions
 - Inclusive campus community coalition with diverse group of stakeholders.
 - Comprehensive approach to reduce high-risk drinking and associated harms using both environmental and individual strategies.

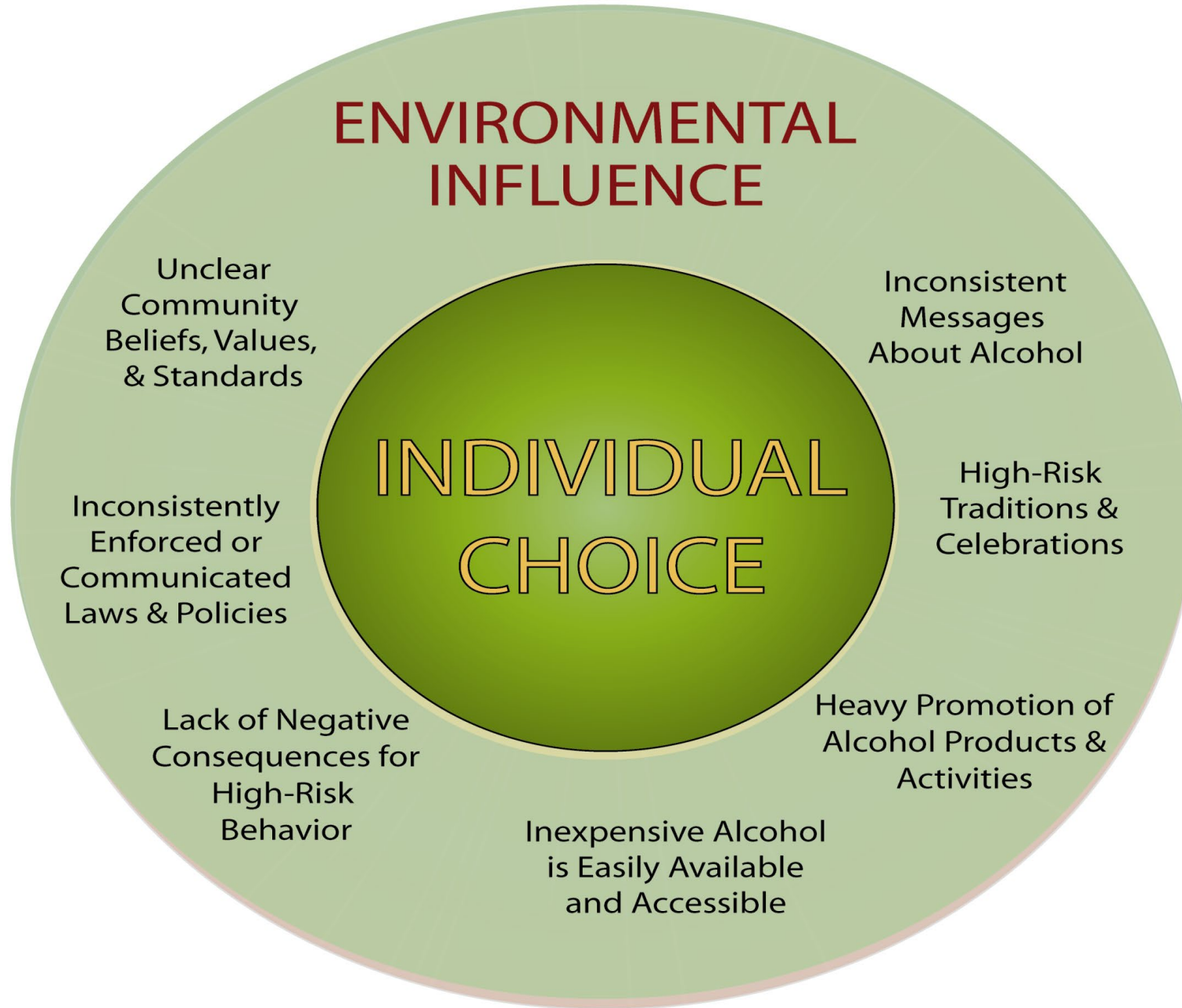
Wechsler et al., (2002)



Guiding Principles

- Focus efforts on harm reduction
- Viewed high-risk drinking as a shared responsibility of campus and community
- Utilized an inclusive process involving all stakeholders
- Adopted a comprehensive approach incorporating both individual and environmental strategies





Environmental Management

- Integrated combination of programs, policies and education campaigns
- Typically conducted in collaboration with surrounding community
- Intellectually grounded in public health
- Emphasizes the broader physical, social, cultural and institutional forces



Data Driven Strategy Selection

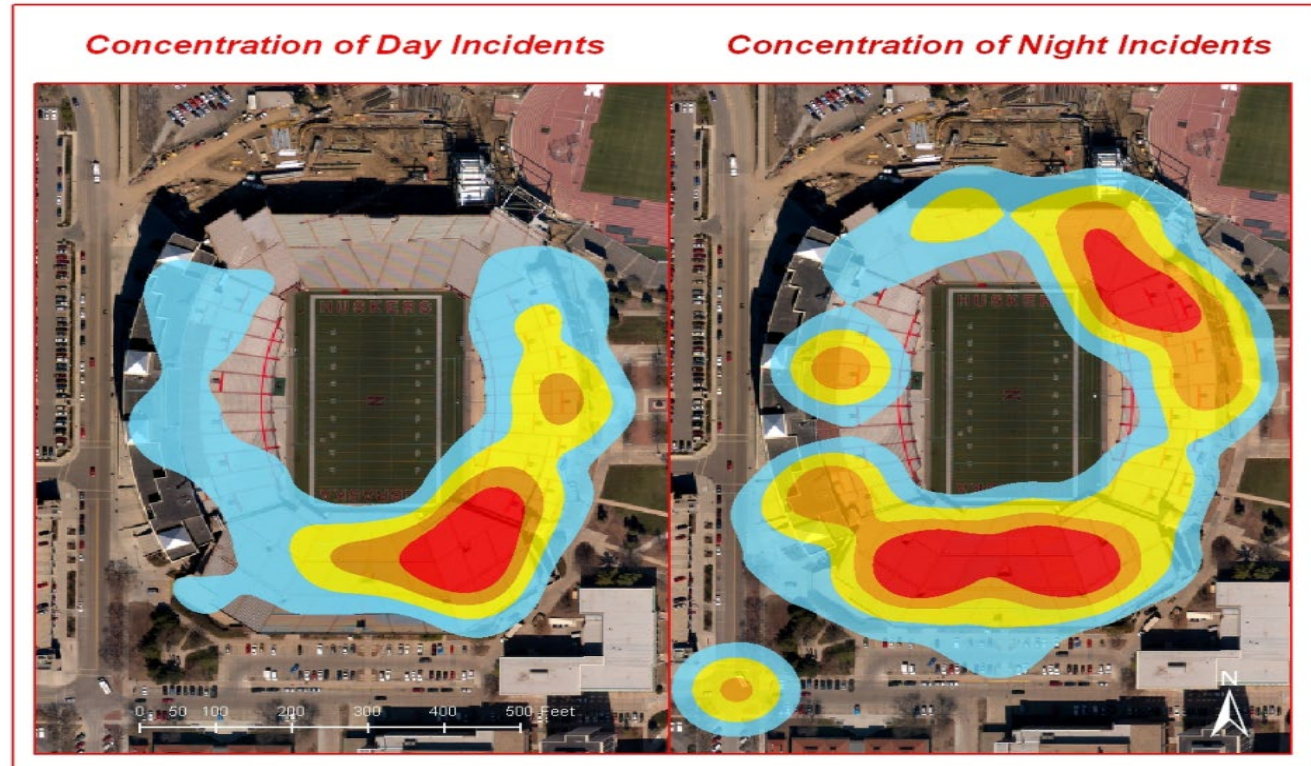
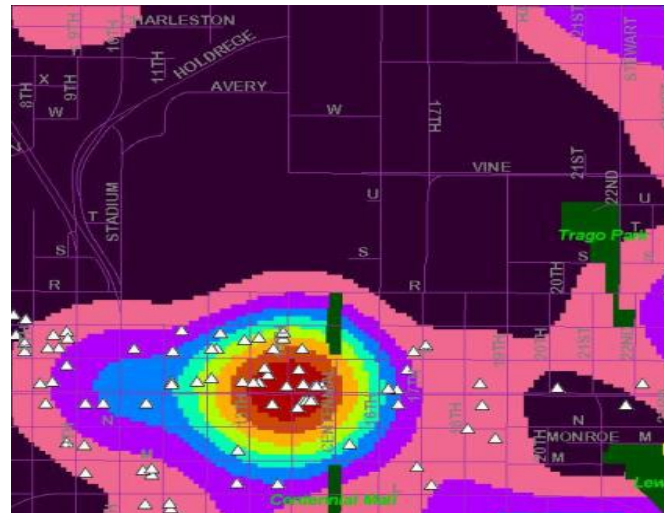
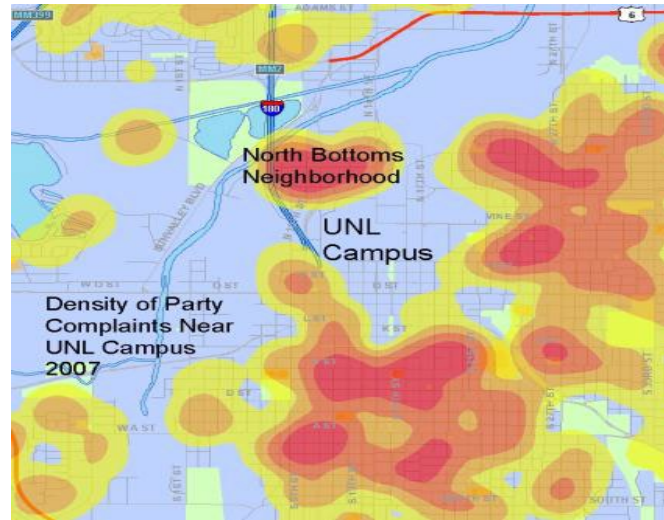
Systems approach to data collection and review

- Weekly review of student related citation data
- Monthly review of student admissions to The Bridge
- Regular review of student self-report drinking behavior
 - Y1College Alcohol Profile
 - ACHA-NCHA
 - Sub-population or special topic
 - NSE Inventory
- Last Drink Data
- Neighborhood Complaints
- Market Trends
- Police reports/GIS Maps

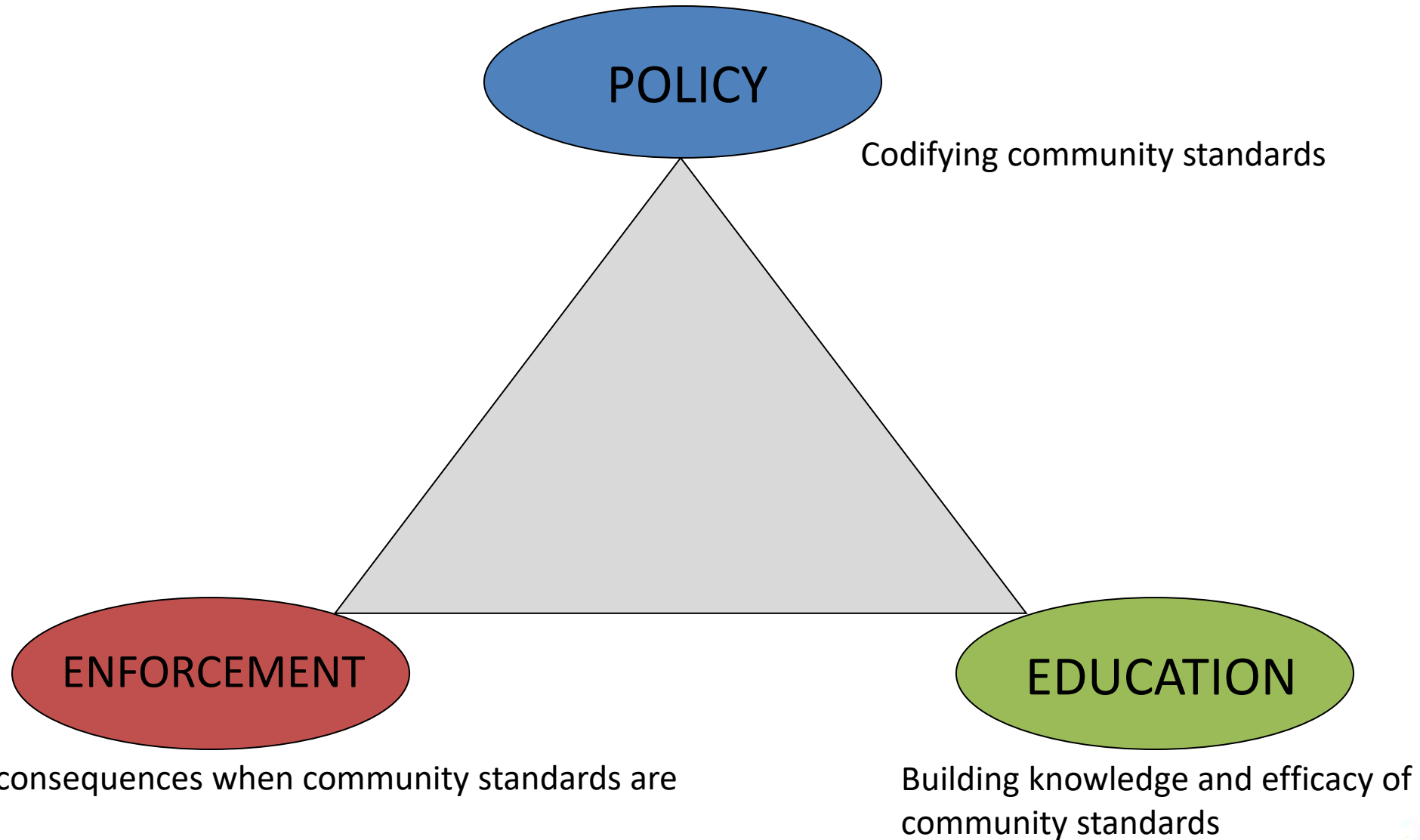
Data analyzed to identify patterns, trends and/or emerging issues



GIS Mapping Neighborhoods, Downtown Bar District and Memorial Stadium

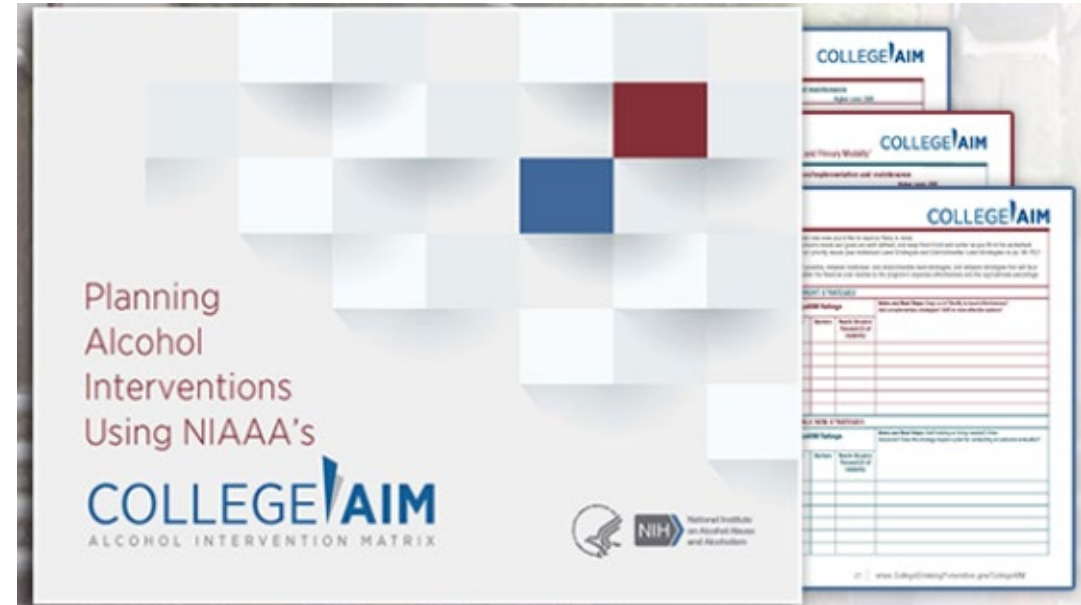


Strategy Selection



NIAAA College AIM (Alcohol Intervention Matrix)

- Environmental Strategies – 25 of 36 environmental strategies with high, moderate or mixed research evidence
- Individual Strategies – 4 of 7 individual strategies with high research evidence
 - Education alone is an ineffective strategy.



20%

Always act ethically

60%

Open to Influence

20%

Never act ethically



Comprehensive Framework and Resulting Activities of the NU Directions Campus-Community Coalition in Lincoln, Nebraska

ENVIRONMENTAL STRATEGIES employed by NU Directions were based on a framework of three key elements: **Policy, Education and Enforcement**

For each environmental factor, a set of measurable objectives were determined and policy, enforcement, and education activities designed to influence the factor.



Environmental Policy:
Codifying community standards

Enforcement:
Ensuring compliance to community standards

Education:
Creating awareness of community standards

ENVIRONMENTAL INTERVENTIONS

Interventions for the Individual

ALCOHOL EDUCATION

MOTIVATIONAL FEEDBACK

BRIEF INTERVENTION

Cultural Change

Providing Consistent Messages About Alcohol

Eliminating/Modifying High-Risk Traditions & Celebrations

Eliminating High-Risk Promotions

Codifying Community Standards
Consistently Enforcing Laws & Policies

Educating About Policies & Consequences

Limiting Access & Availability of Alcohol

Service Learning Projects in Neighborhoods
Social Norms Campaigns
Social Marketing Campaigns
Special Events
Late Night Activities

Message Development Coordination with Orientation Leaders
Resident Advisor Training in Alcohol Issues
Annual Greek Alcohol Summit for New Members
Clear Alcohol Policy Statements Across Campus
College-Wide Instruction on Alcohol Issues

Birthday Bar Crew
Prohibit Party Goals
Student Birthday Cards
Educating/Enforcing
Trigging Policy in University Property
Third Party Vendor Policy
Educating on Safe Party Hosting

Active Participation on City's Internal Liquor Committee
Mandatory Responsible Hospitality Training for Managers in Lincoln
Coalition Member Response to High-Risk Promotions on Campus/In Community
Working with Marketing Classes to Design Low-Risk Promotions for Local Vendors
Promoting Responsible Alcohol Service to Students

Collaboration with Neighborhood Associations:
-Neighborhood Notes, Parking, Trash Standards
Detailing Clear Campus Policies:
-Permitted/Restricted Use of Alcohol
-Alcohol Prohibition on Campus
-Judicial Sanctions for Policy Violations
Collaborating with City Officials on Ordinances:
-Approval of Special Designated Licenses on Football Game Days
-Approval of Additional Liquor Licenses Near Campus
-Manager and Server Training Requirements
Advocating for Supportive State Laws:
-Secure State Driver's License
-Outlet Density Restrictions
-Increased Penalties for DUI

Lincoln Police Department "Wild Party Patrol"
Open Container Citations on Football Game Days
Referral of Off-Campus Violations to Judicial Affairs
Increased MIP Citations Across Campus & Community
Increased DUI Citations Across Campus & Community

Alcohol Policy Education at Orientation
Campus-Wide Distribution of Posters on Alcohol Policy/Consequences
Web-Based Server/Barista Training Program for Licenses
Ride-Along Program with District/City Police
Student Forums on Alcohol Policy Enforcement

Conducting a "Take 10" Forum in the Community
Conducting ID Compliance Checks at Local Retail Outlets
Enforcing On-Campus Alcohol Policies in Student Residences
Enforcing Openly House Ordinances at Student Parties in Neighborhoods



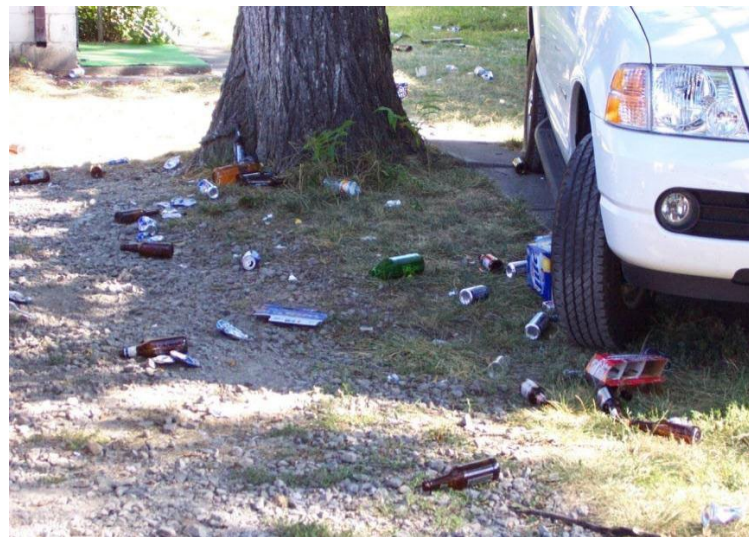
NU Directions
Student Involvement, University of Nebraska-Lincoln
200 Nebraska Union, Lincoln NE 68588-0453
(402) 472-2454 www.nudirections.org



On the Campus



In the Downtown Bar District



In the Surrounding Neighborhoods



In and Around the Stadium



	Campus Environment	Neighborhood Environment	Retail Environment	Game Day Environment
Policy	<ul style="list-style-type: none"> Brief intervention/screening in UHC Good Samaritan Law (across all environments) Campus Alcohol Permit (limited availability) Prohibited alcohol use in sports venues Safe Ride Program 	<ul style="list-style-type: none"> Community violations adjudicated on campus Party registration program Social Host Disorderly House Law 	<ul style="list-style-type: none"> Digital Driver's License License conditions in high dense areas Seller/server education permit Mandatory management training program Happy Hour Laws Keg Registration 	<ul style="list-style-type: none"> Loss of season ticket for chronic problems Special Designated Permit restriction on game day Redesign of student ticketing
Education	<ul style="list-style-type: none"> Web-based personalized feedback BASICS Alcohol skills training Social Norms Bystander Intervention Group Profile project FailSafe risk management tool for groups Parent education 	<ul style="list-style-type: none"> LPD website for landlords Neighborhood campaigns Customized education program for violators 	<ul style="list-style-type: none"> Last Drink Data Community forums Bar walks Point of sale campaigns 	<ul style="list-style-type: none"> Tailgate campaigns Texting program Husker Playbook – protective behaviors
Enforcement	<ul style="list-style-type: none"> Commissioned police force supported by Community Service Officers Increased consistency across residence halls 	<ul style="list-style-type: none"> Wild Party Patrol Disorderly House Citations issued to both landlords and tenants Strong landlord tenant contracts 	<ul style="list-style-type: none"> Special emphasis on sales to intoxicated Increased tavern checks Meetings with Internal Liquor Committee 	<ul style="list-style-type: none"> Obvious violations prosecuted Intoxicated fans barred from entry Focus on neighborhoods adjacent to campus



College Alcohol Profile



College Alcohol Profile



UNL College Alcohol Profile

Welcome to the University of Nebraska-Lincoln College Alcohol Profile.

i This survey is for University of Nebraska-Lincoln entering first-year students only. If you are not a University of Nebraska-Lincoln entering first-year student or have not yet been assigned a UNL Student ID number, you will not be able to take the survey.

The CAP is a quick and confidential way to get personalized feedback on your alcohol use. The CAP was created with input from and designed for UNL students. The survey will take you about 10 minutes to complete — be honest and accurate. When you're finished, you will immediately receive your feedback. Read it carefully and print a copy to keep.

i Your identity and the information you provide will be kept confidential and will be seen only by authorized UNL personnel.

Start →



Precollege Binge Drinking

- Highest predictor of college binge drinking is precollege binge drinking
 - FY College Alcohol Profile
 - Rape Myth Acceptance Scale
- Second highest predictor of college binge drinking is precollege academic motivation
 - NSE Inventory
 - Motivation
 - Time Management
 - Aptitude
 - Persistence (Grit)
 - Intent to Become Involved



Group Profile Initiative

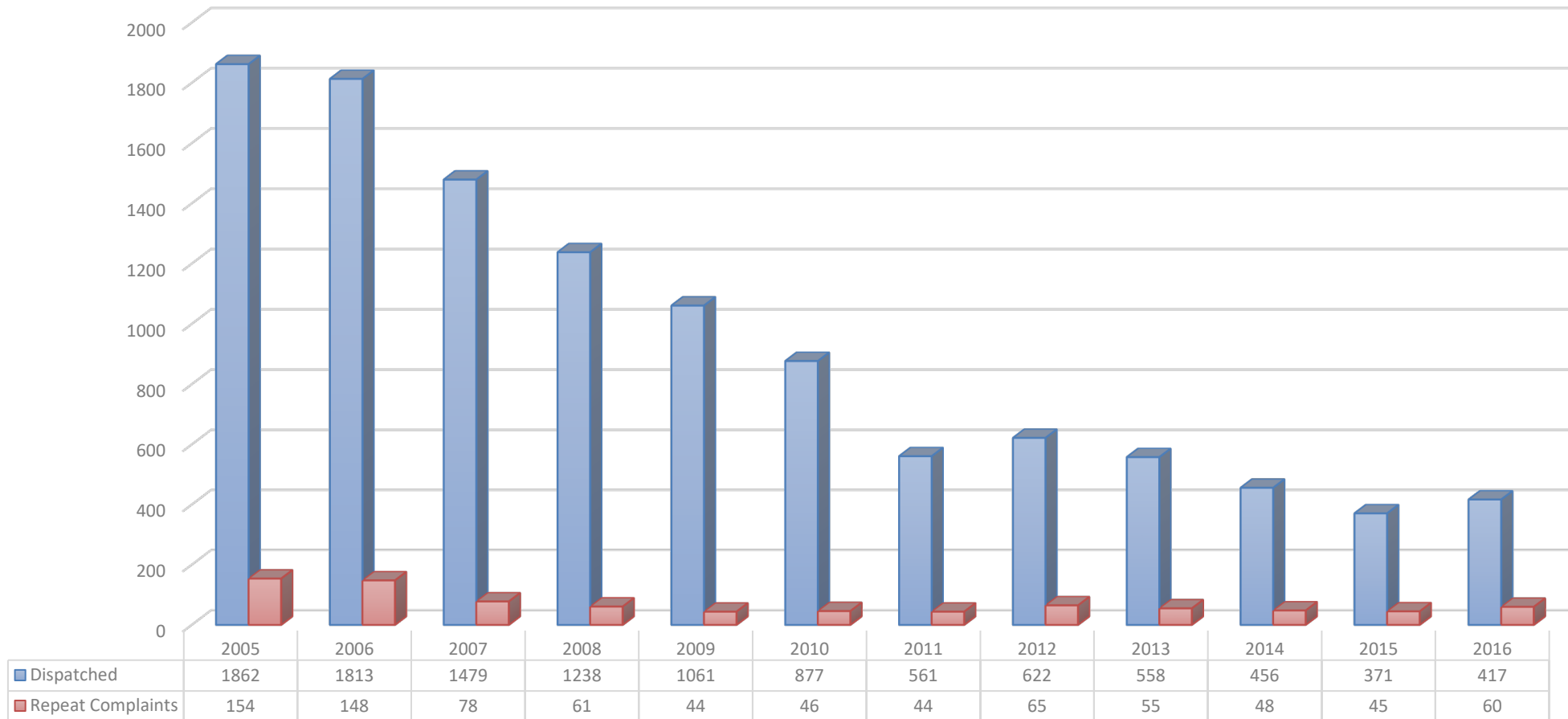
Primary Goal: Provide customized academic and health-related programming based on sub-group data.

1. Created aggregate profiles for each residence hall, fraternity, and sorority based on Y1-CAP and NSE Inventory Data
2. Developed a menu of educational strategies and messaging options based on aggregate profile
3. Considered environmental strategies within context micro-environments
4. Met with Residence Hall Directors and Greek Advisors to discuss practical applications



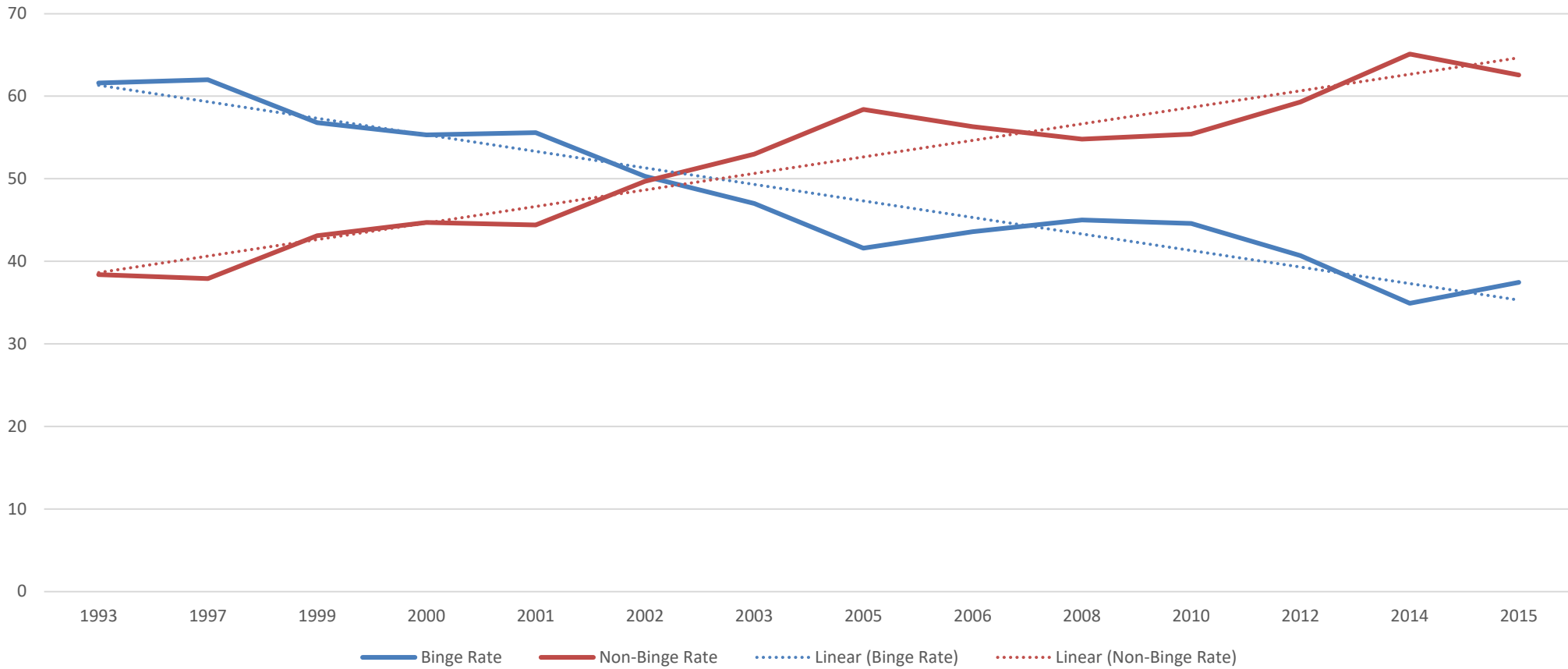
Wild Party Calls (citywide)

Wild Party Calls by Dispatch and Repeat Complaints (citywide)



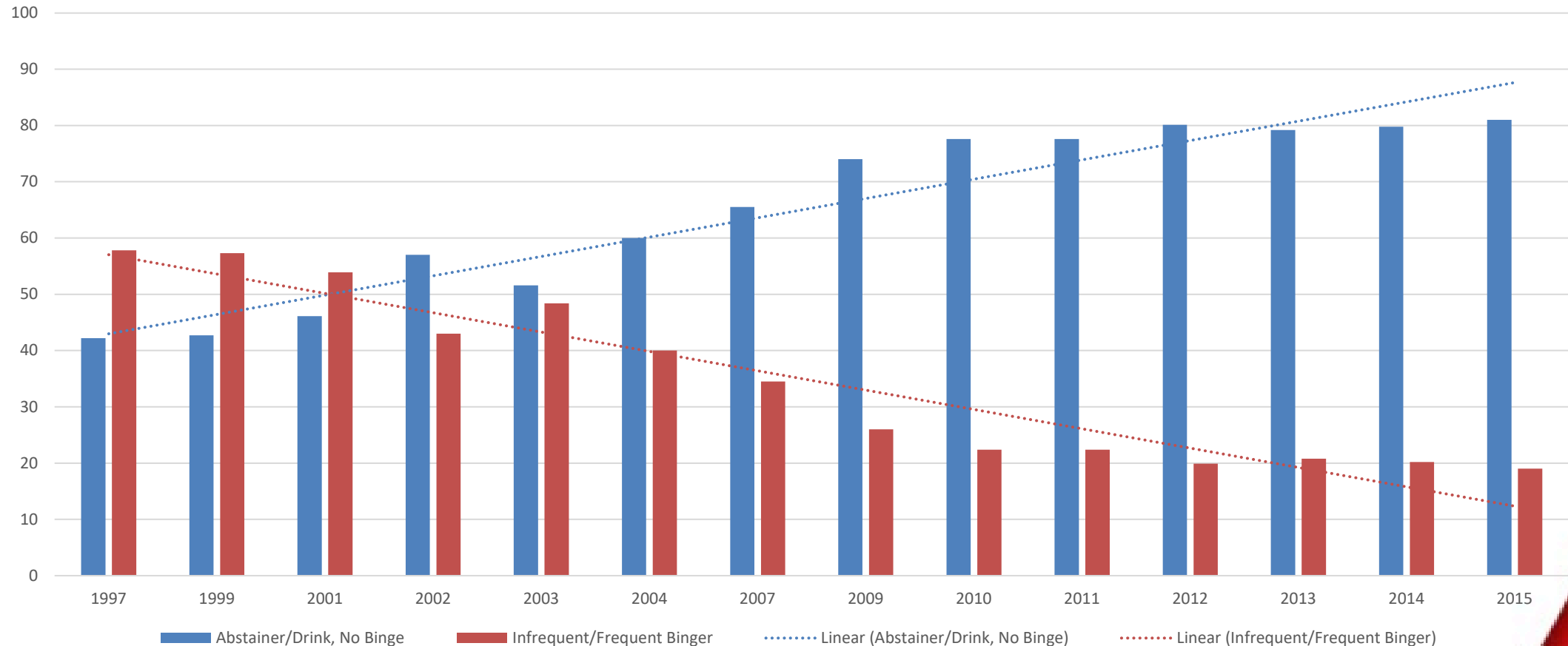
Student Binge Rate

University of Nebraska-Lincoln (All Students)
Binge Rate 1993 - 2015



Drinking Classification by Entering Class

University of Nebraska-Lincoln
Drinking Classification by Entering Class 1997 - 2015



Potential Reasons for Success

- Coalition staff understood community organizing
- Effective communications strategy
- Commitment to the environmental approach and continuous scanning
- Flexible strategic plans
- Recognizing and acting upon opportunities to advance coalition goals
- Highlighting positive changes



Collective Impact

"Collective impact brings people together from across a community to address a common goal or bring about a desired social change."

Five conditions common among successful collective impact initiatives:

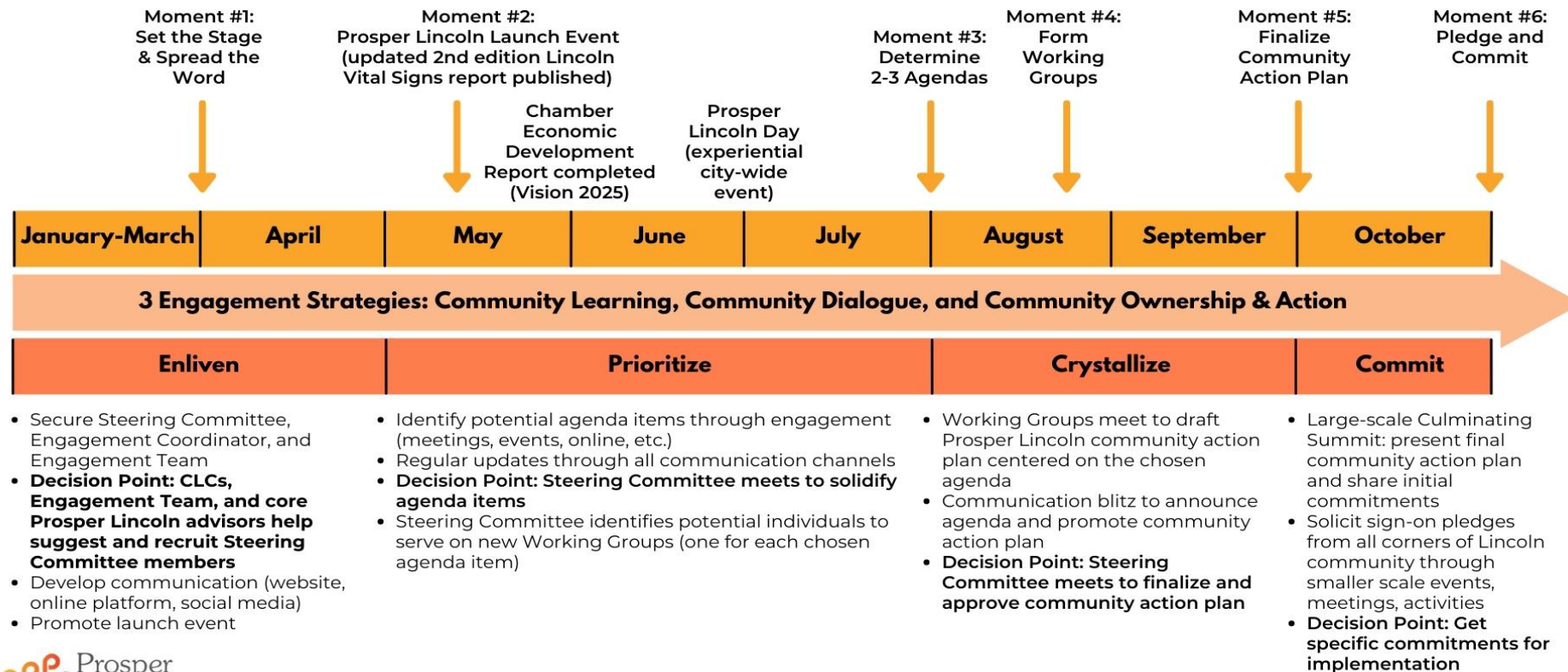
- Backbone support
- Common agenda
- Mutually reinforcing activities
- Shared measurement system
- Continuous communication

Kania & Kramer (2011)



Prosper Lincoln

Arc of Prosper Lincoln



Major et al., (2022)



Questions?

Linda Major

lmajor1@unl.edu



References

Kania, J., & Kramer, M. (2011). Collective Impact. *Stanford Social Innovation Review*, 9(1), 36-41. <https://doi.org/10.48558/5900-KN19>

Major, L.J., Lauerma, M.A., Bartle, B.J. (2022). Addressing research-validated community needs through data-driven community philanthropy: A case study. *Local Development & Society*, 5(1), 31-43

National Institute on Alcohol Abuse and Alcoholism. (2024). *CollegeAIM - The College Alcohol Intervention Matrix*. <https://www.collegedrinkingprevention.gov/collegeaim>

Newman, I.M., Shell, D.F., Major, L.J., & Workman, T.A. (2006). Use of policy, education, and enforcement to reduce binge drinking among university students: The NU Directions project. *International Journal of Drug Policy*, 17, 339-349

Trolan, T L., An, B.P. & Pascarella, E.T. (2016). Are There Cognitive Consequences of Binge Drinking During College. *Journal of College Student Development*, 57, 1009-1026

